

## Answers: 6.1.2.12. Lab - Manage Virtual Memory in Windows 8

### Introduction

In this lab, you will customize virtual memory settings.

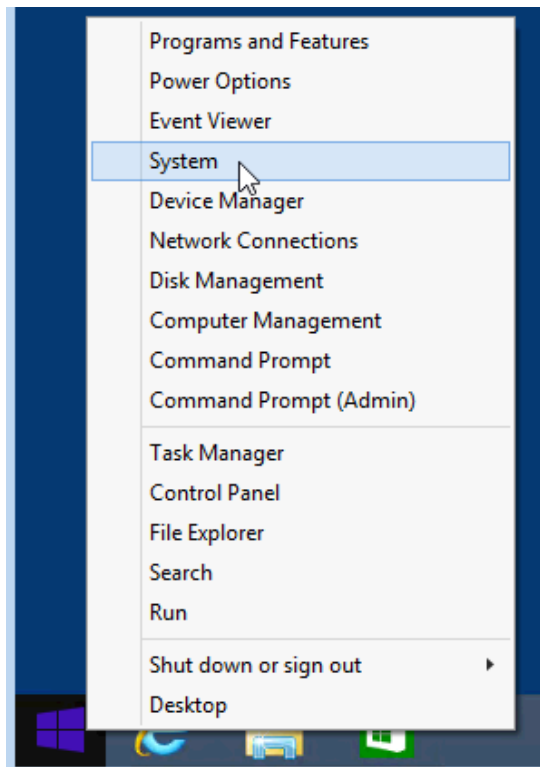
### Recommended Equipment

- A computer with Windows 8 installed
- The hard drive must have two or more partitions.

**Note:** At least 2GB of free space is recommended on the second partition.

### Step 1: Open System Properties

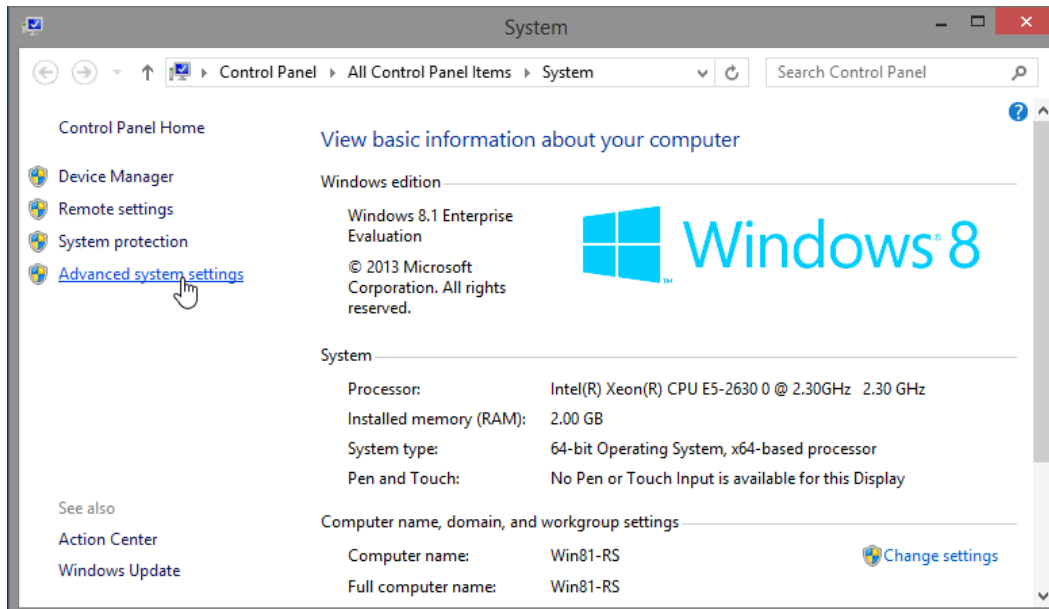
- Right-click **Start** and select **System**.



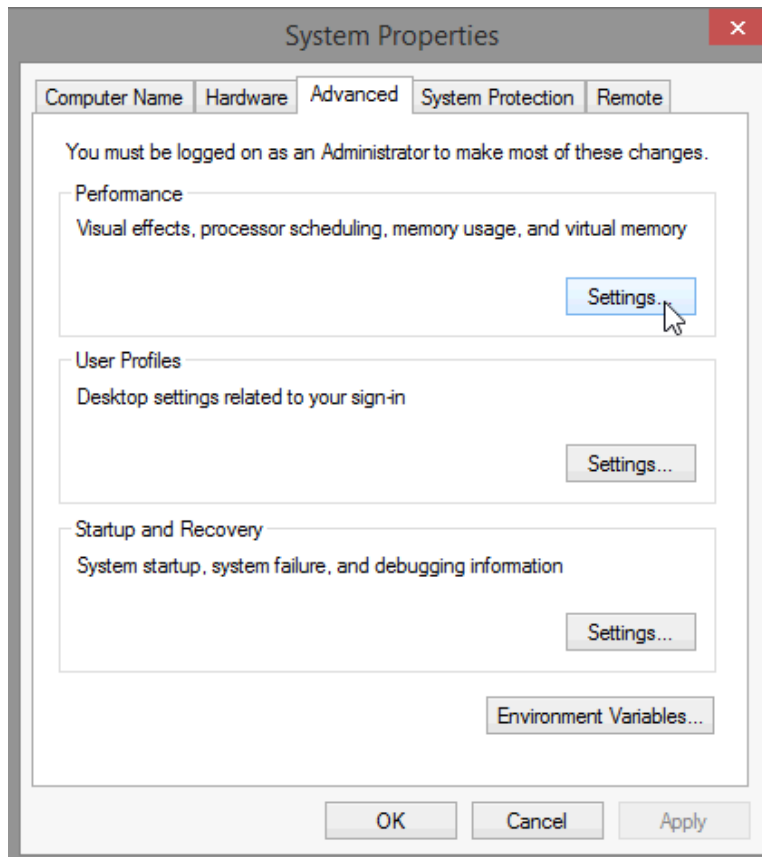
**Note:** In Windows 8.0, bring up the charms menu, click **Search**, type **computer** and press **Enter**. Right-Click on **Computer** in the left pane of the **Computer** window and select **Properties**.

## Lab – Manage Virtual Memory in Windows 7 and Vista

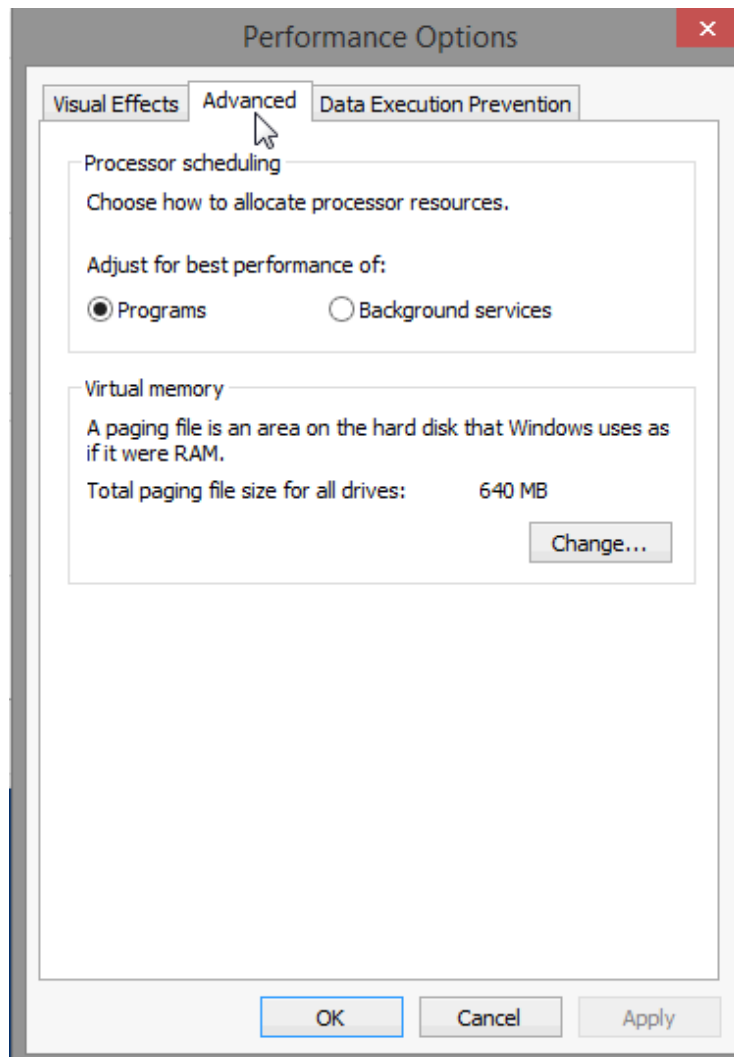
- b. In the **System** window, click **Advanced system settings**.



- c. The **System Properties** window opens. Select the **Advanced** tab and click **Settings** in the Performance area.



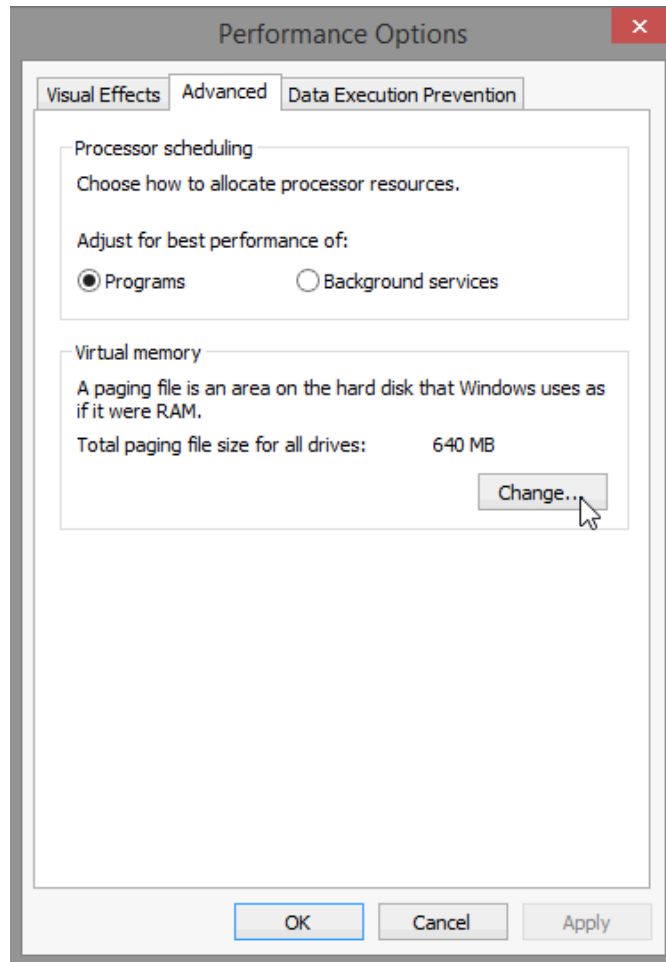
- d. The **Performance Options** window opens. Click the **Advanced** tab.



What is the current size of the virtual memory (paging file)?

**Step 2: Make virtual memory changes.**

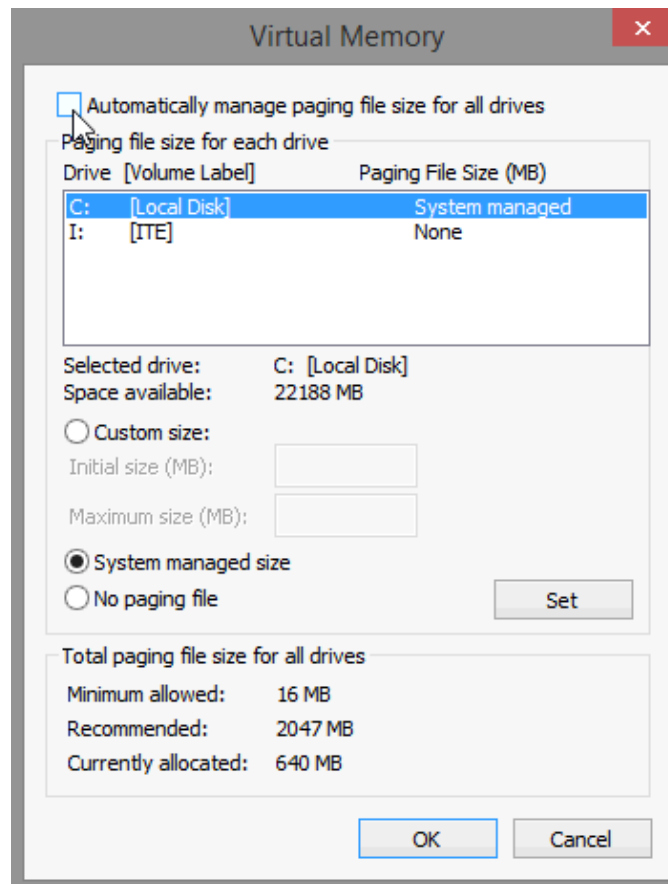
- a. Click **Change** in the Virtual memory area to open the **Virtual Memory** window.



## Lab – Manage Virtual Memory in Windows 7 and Vista

---

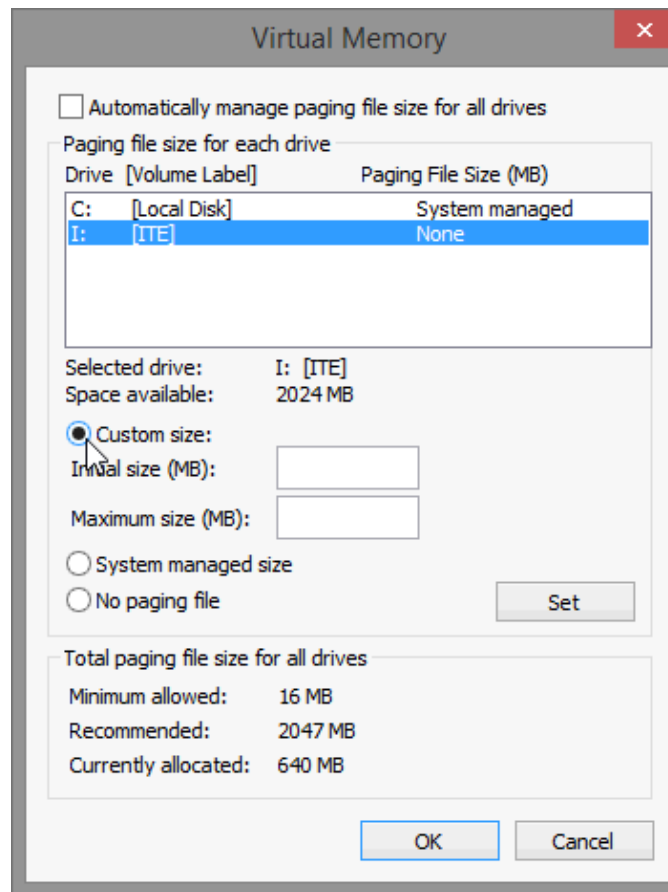
- b. Remove the check mark from **Automatically manage paging file size for all drives**.



What Drive [Volume Label] contains the paging file?

## Lab – Manage Virtual Memory in Windows 7 and Vista

- c. Choose the **I:** drive. Select the **Custom size:** radio button.

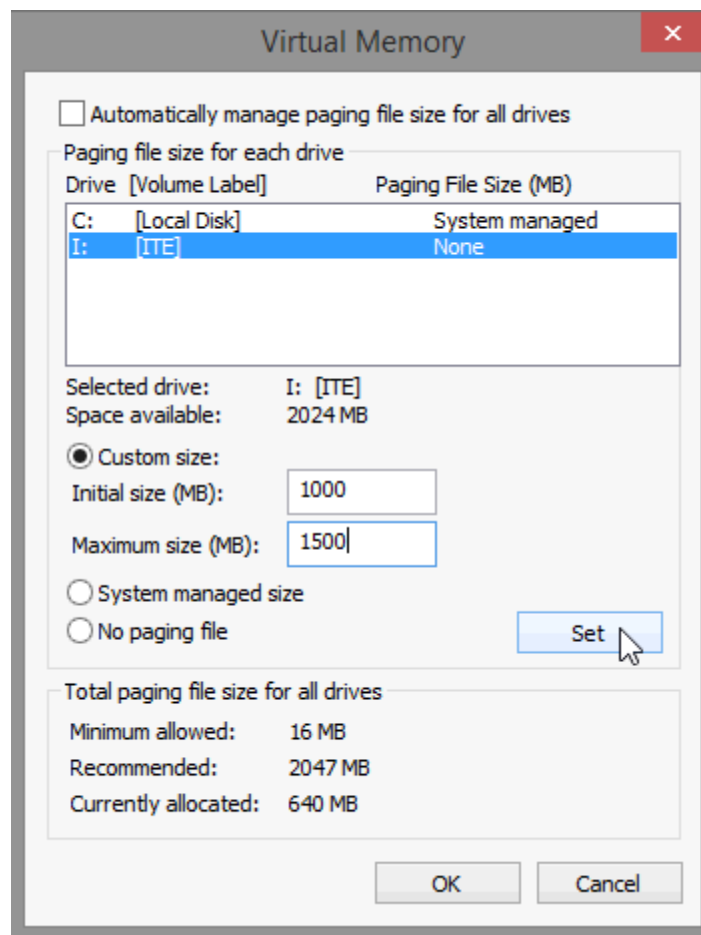


**Note:** Your drive letter and volume may be different than the example. Replace **I:** with the drive letter for your second partition on your PC.

What is the recommended paging file size for all drives?

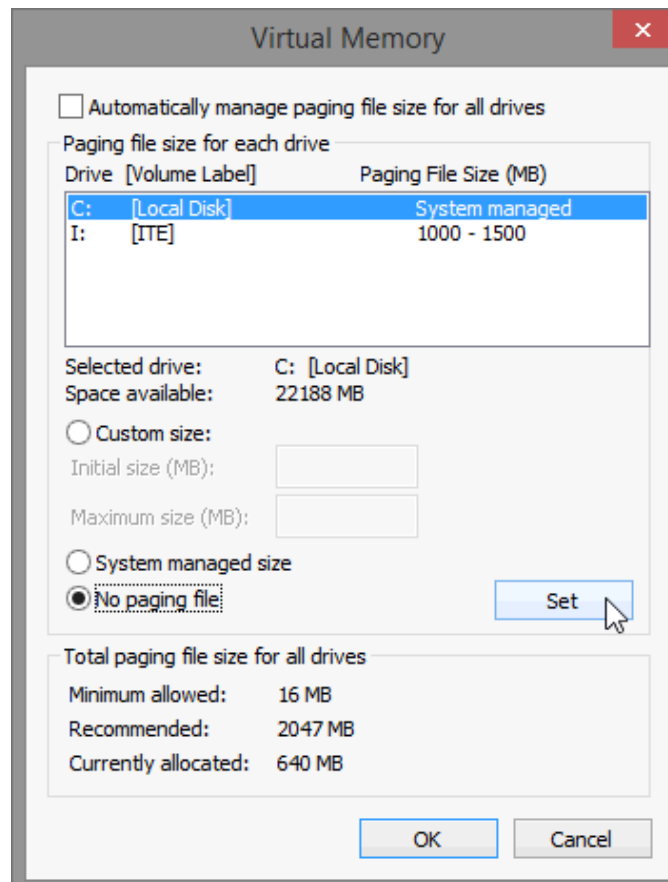
## Lab – Manage Virtual Memory in Windows 7 and Vista

- d. Enter a number smaller than the recommended file size in the **Initial size (MB)**: field. Enter a number that is larger than the Initial size but smaller than the recommended file size in the **Maximum size (MB)**: field. Click **Set**.

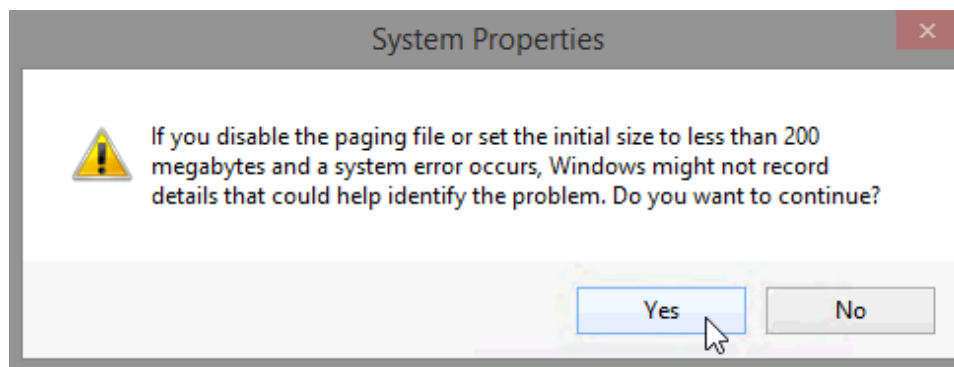


## Lab – Manage Virtual Memory in Windows 7 and Vista

- e. Select the **C:** drive. Select the **No paging file** radio button, and click **Set**.



- f. The System Properties warning message displays. Click **Yes**.



- g. Click **OK** on the **Virtual Memory** window to accept the new virtual memory settings.  
h. Click **OK** on the **Performance Options** window to close it.  
i. Click **OK** on the **System Properties** window to close it.

### Step 3: Navigate back to the Virtual Memory window to verify changes.

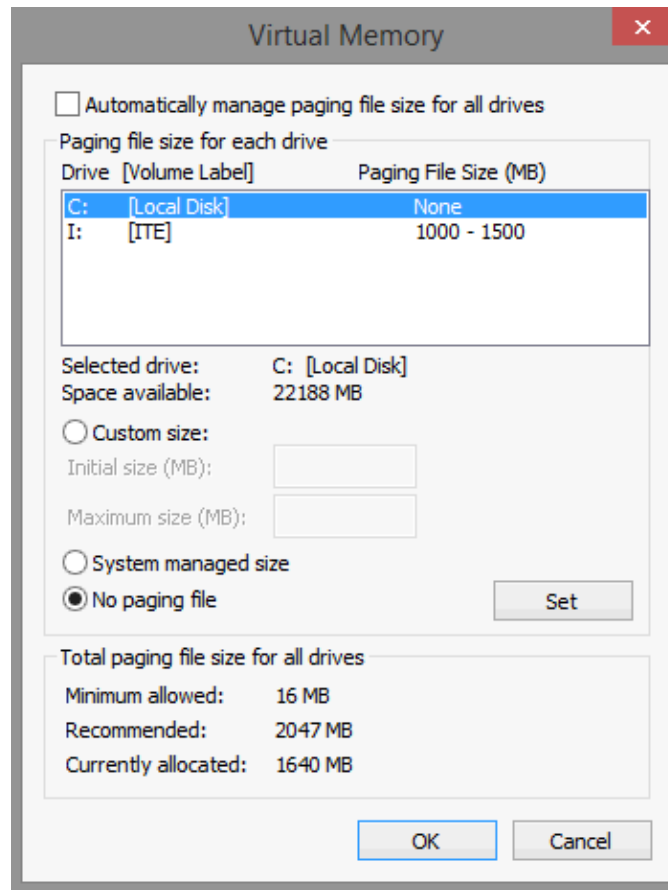
- a. The **System Properties** window opens. Select the **Advanced** tab and click **Settings** in the Performance area.



## Lab – Manage Virtual Memory in Windows 7 and Vista

---

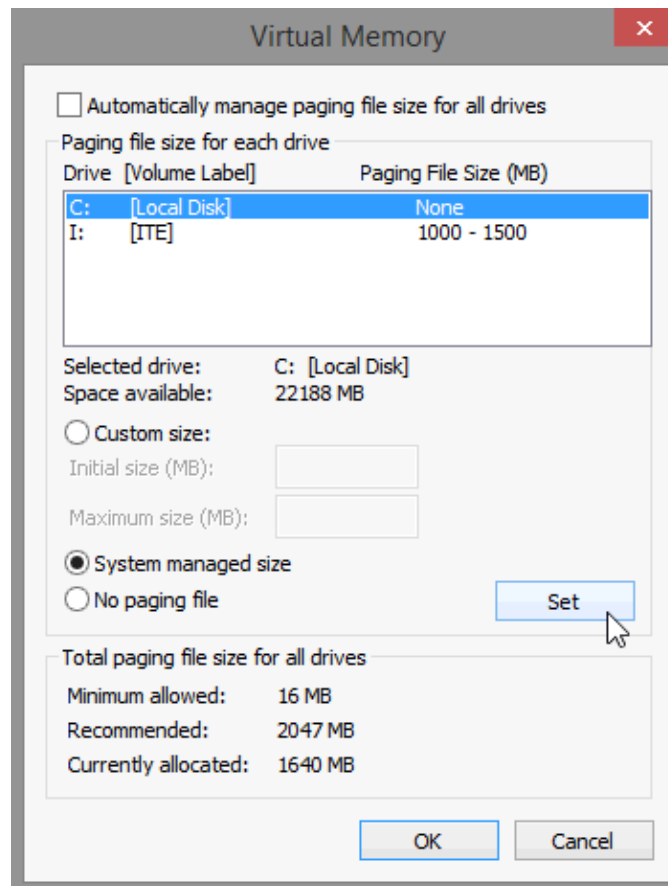
- b. The **Performance Options** window opens. Select the **Advanced** tab and click **Change**.
- c. The **Virtual Memory** window opens displaying the new paging file information. Verify that your changes have been made.



What Drive [Volume Label] contains the paging file?

**Step 4: Reset the virtual memory back to the original settings.**

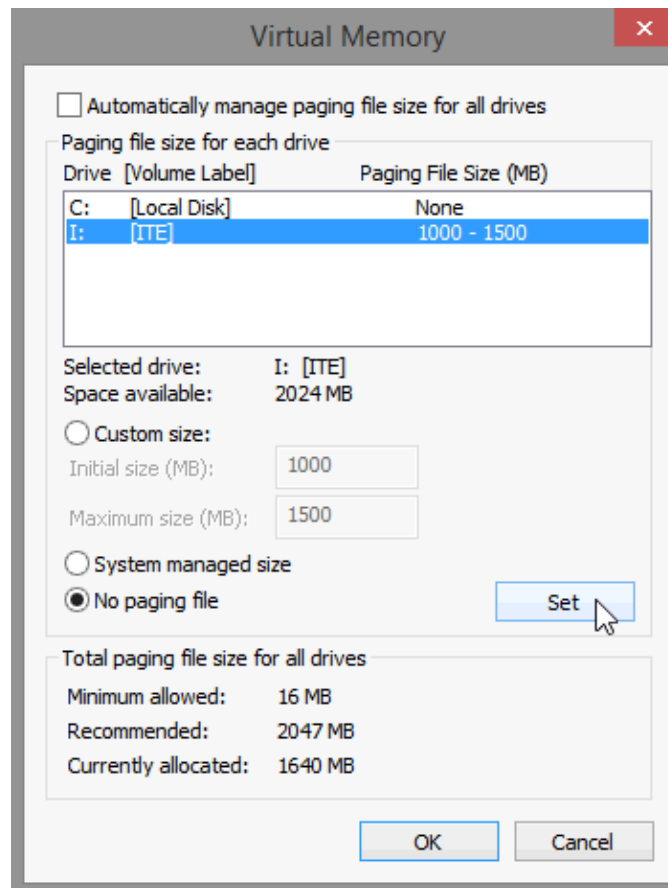
- a. Select drive **C: [Local Disk]** > **System managed size** > **Set**.



## Lab – Manage Virtual Memory in Windows 7 and Vista

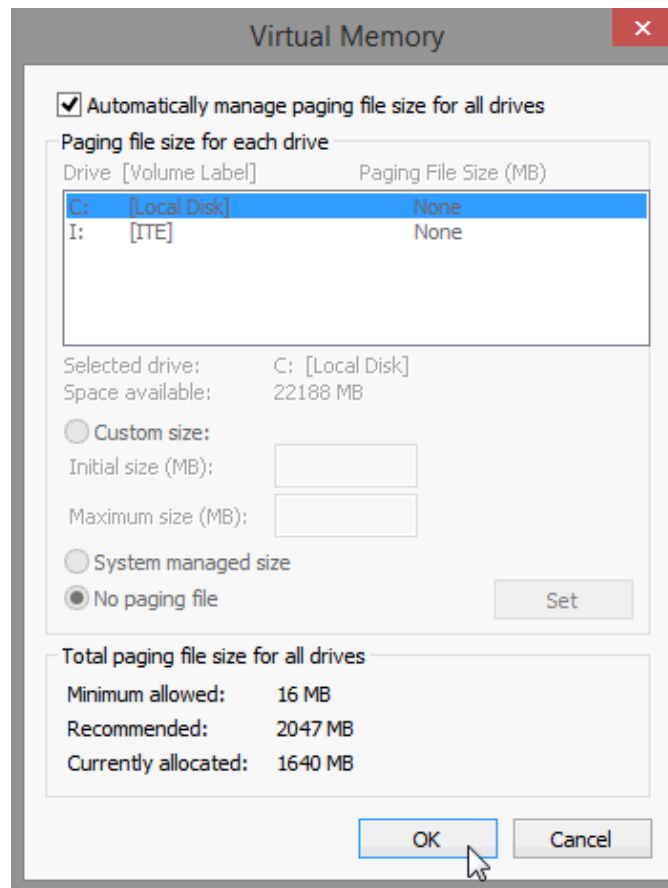
---

- b. Select I: > **No paging file** > **Set**.

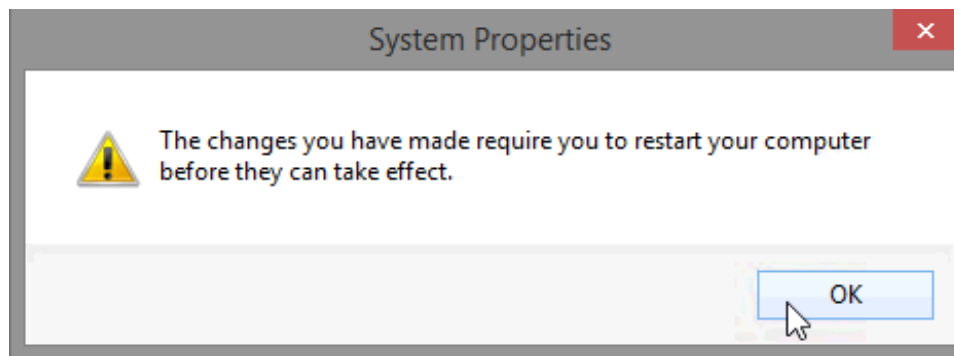


## Lab – Manage Virtual Memory in Windows 7 and Vista

- c. Check **Automatically manage paging file size for all drives**, and then click **OK**.



- d. The **System Properties** window opens informing you that a restart is required before changes will take effect. Click **OK**.

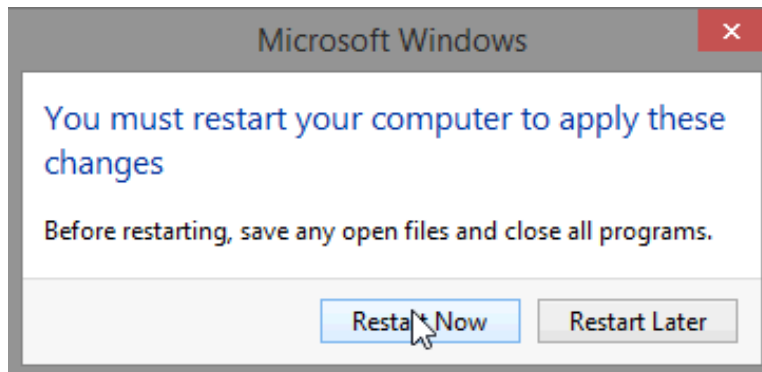


- e. Click **OK** to close the **Performance Options** window. Click **OK** to close the System Properties window.

## Lab – Manage Virtual Memory in Windows 7 and Vista

---

- f. The warning message displays: You must restart your computer to apply these changes. Click **Restart Now**.



### Reflection

Why would you ever change the default virtual memory page file settings in Windows?